



# Test Method

Potency Analysis by  
High Performance Liquid Chromatography

### Cannabinoid Potency Results

- Stronger than advertised
- Exactly as advertised
- Weaker than advertised

Test Accreditation #: 77802

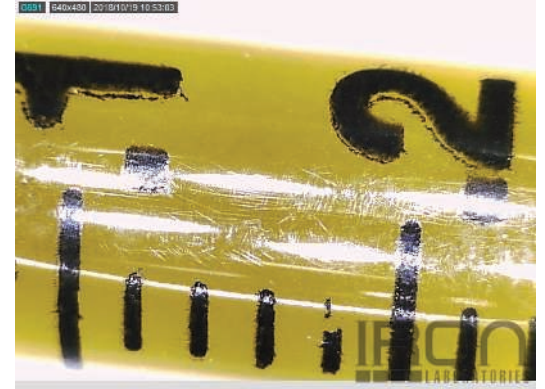
Test Certificate #: 112525-001

**Sample Details**  
**Product:** Tasty Drops 1oz, 1000mg  
**Sample:** 101818A  
**LOT:** FG002028/44  
**Sampled Product:** Infused Product  
**Method:** FE04 HPLC1100-1  
**Molds/Pests:** N/A

**Test Conditions**  
**Scale:** XS205-MI2  
**Temp.:** 21.6 °C  
**Baro Pressure:** 983.8 hPa

**Sample ID#: 112525**

Test Date: 10/18/2018



**Simple Cannabinoid Overview**  
**Advertised:** 1,000mg per 1oz (29.4g)  
**\*\*Grand Total:** 999.6mg per 1oz (29.4g)

Test Compounds	CBDV*	CBDA	CBD	CBC*	CBG*	CBN	Total	CBD Decarb. %	THC
Amount	N/D	24.3 mg/g	9.7 mg/g	N/D	N/D	N/D	34.0 mg/g	100%	N/D <sup>†</sup>
LOQ	1 mg/g	1 mg/g	1 mg/g	1 mg/g	1 mg/g	1 mg/g	-	-	-
Amount per Serving <sup>~</sup>	N/D	24.3 mg/srv	9.7 mg/srv	N/D	N/D	N/D	Serving Size <sup>~</sup> (g):	1.00g	-
Uncertainty	±5%RSD	±5%RSD	±5%RSD	±5%RSD	±5%RSD	±5%RSD	±5%RSD	-	-

## \*\*Grand Total Cannabinoid Content



LOQ = Limit of Quantitation; %RSD = Relative Standard Deviation; N/D = Not Detected

<sup>†</sup>Uncertainty measurement is for the test procedure and the instrument used; and is calculated in accordance with the ISO "Guide of Uncertainty in Measurement" (GUM) Test Results and uncertainty are only representative of the sample submit to Iron Laboratories. Uncertainty does not account for any uncertainty in the sampling. The measurement of uncertainty is the expanded uncertainty and is an estimate of uncertainty calculated with normal distribution and a coverage factor of 2 (K=2) to approximate a 95% confidence level.

\*Designates compounds that are not currently included in Iron Laboratories' accredited scope.

CBD Decarb. % refers to the percentage of CBD relative to CBDA.

Calc. Max is the calculated sum of CBD and the amount of CBD derived from CBDA. These values are calculated by applying a molar correction factor of 0.877 to the CBDA value.

All lab testing is performed by a third party facility at one of the labs listed below. The results are taken from a sample of this product. This Certificate of Analysis (COA) is for internal use only and shall not be replicated or shared without written approval from CBD Guru.

\*\*Grand Total is determined by calculating the results from the sample size to the total product size.

<sup>†</sup>This passes our quality control guidelines for non-psychoactive industrial hemp oil. For questions or concerns, please contact us.



ISO/IEC 17025:2005 Accredited



*[Handwritten Signature]*

Management Signature