

# Endoca Certificate of Analysis

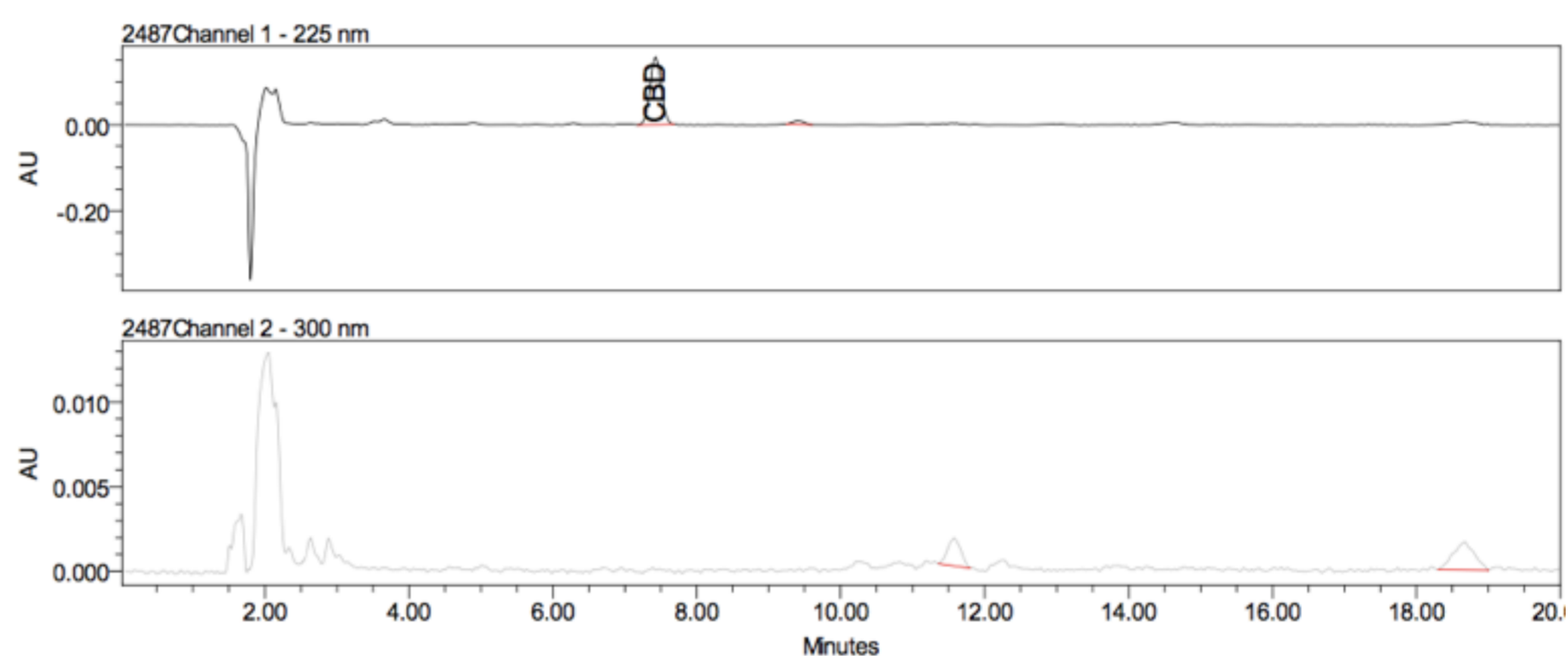
Endoca BV  
Siriusdreef 17 2132 WT Hoofddorp EU  
Phone: +31-238-080-104  
info@endoca.com  
www.endoca.com  
ISO 22000 certified  
HACCP certified; GMP certified

Responsible Supervisor: Martin V.  
Sample: Batch# 19SA  
Date samples received: 16-January 2019  
Date analysis began: 16-January 2019  
Date sample report produced: 31-January 2019  
ID Number when available: \_\_\_\_\_  
Sample Mass: 1 g

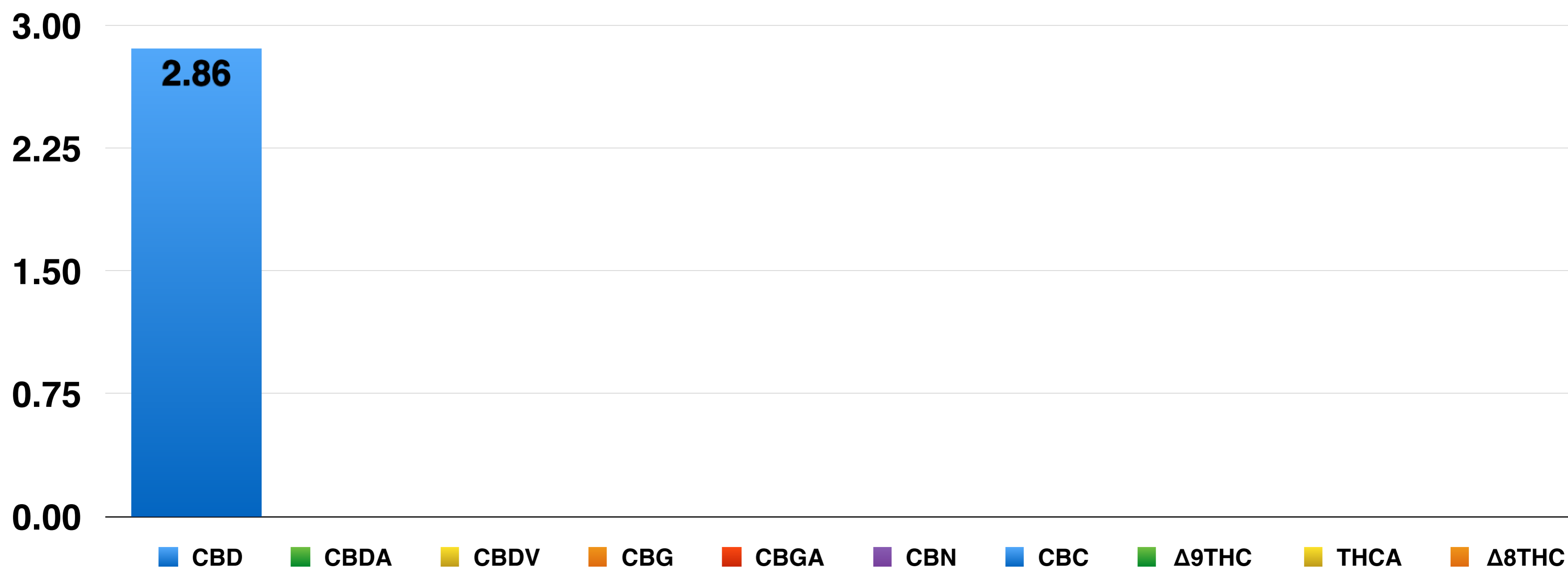
## Cannabinoid Profile:

Component	Mass (%)	Amount (mg/g)	Limit
CBD	2.86	28.60	N/A
CBDA	<0.05	<0.50	N/A
CBDV	<0.05	<0.50	N/A
CBG	<0.05	<0.50	N/A
CBGA	<0.05	<0.50	N/A
CBN	<0.05	<0.50	N/A
CBC	<0.05	<0.50	N/A
$\Delta$ 9THC	<0.05	<0.50	N/A
THCA	<0.10	<1.00	N/A
$\Delta$ 8THC	<0.05	<0.50	N/A

## HPLC Chromatogram



## Cannabinoids as Percent of Total Mass



# Endoca Certificate of Analysis

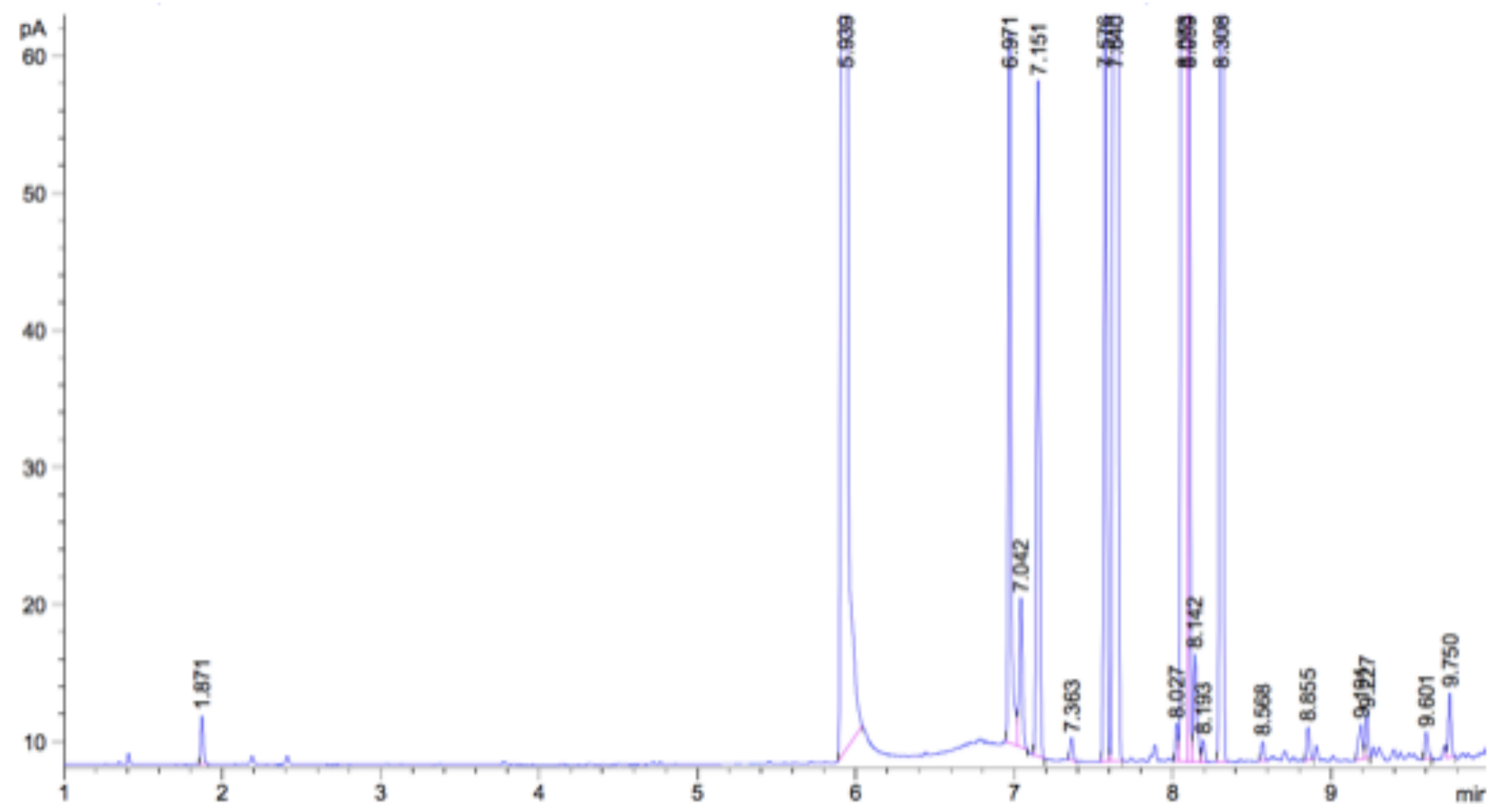
Endoca BV  
Siriusdreef 17 2132 WT Hoofddorp EU  
Phone: +31-238-080-104  
info@endoca.com  
www.endoca.com  
ISO 22000 certified  
HACCP certified; GMP certified

Responsible Supervisor:	Martin V.
Sample	Batch# 19SA
Date samples received:	16-January 2019
Date analysis began:	16-January 2019
Date sample report produced:	31-January 2019
ID Number when available:	
Sample Mass	1 g

## Terpenoid Profile:

Component	Amount %
$\beta$ -Caryophyllene	<0.01
$\alpha$ -Humulene	<0.01
Caryophyllene oxide	<0.01
Myrcene	<0.01
$\alpha$ -Pinene	<0.01
Terpinolene	<0.01
Humulene epoxide II	<0.01
Limonene	<0.01
$\beta$ -Pinene	<0.01
E- $\beta$ -Ocimene	<0.01
Sabinene	<0.01
Linalool	<0.01

## HS-GC-FID Chromatogram



## Terpenoid Distribution

- $\beta$ -Caryophyllene
- $\alpha$ -Humulene
- Caryophyllene oxide
- Myrcene
- $\alpha$ -Pinene
- Terpinolene
- Humulene epoxide II
- Limonene
- $\beta$ -Pinene
- E- $\beta$ -Ocimene
- Sabinene
- Linalool

4

3

2

1

0



# Endoca Certificate of Analysis

Endoca BV  
Siriusdreef 17 2132 WT Hoofddorp EU  
Phone: +31-238-080-104  
info@endoca.com  
www.endoca.com  
ISO 22000 certified  
HACCP certified; GMP certified

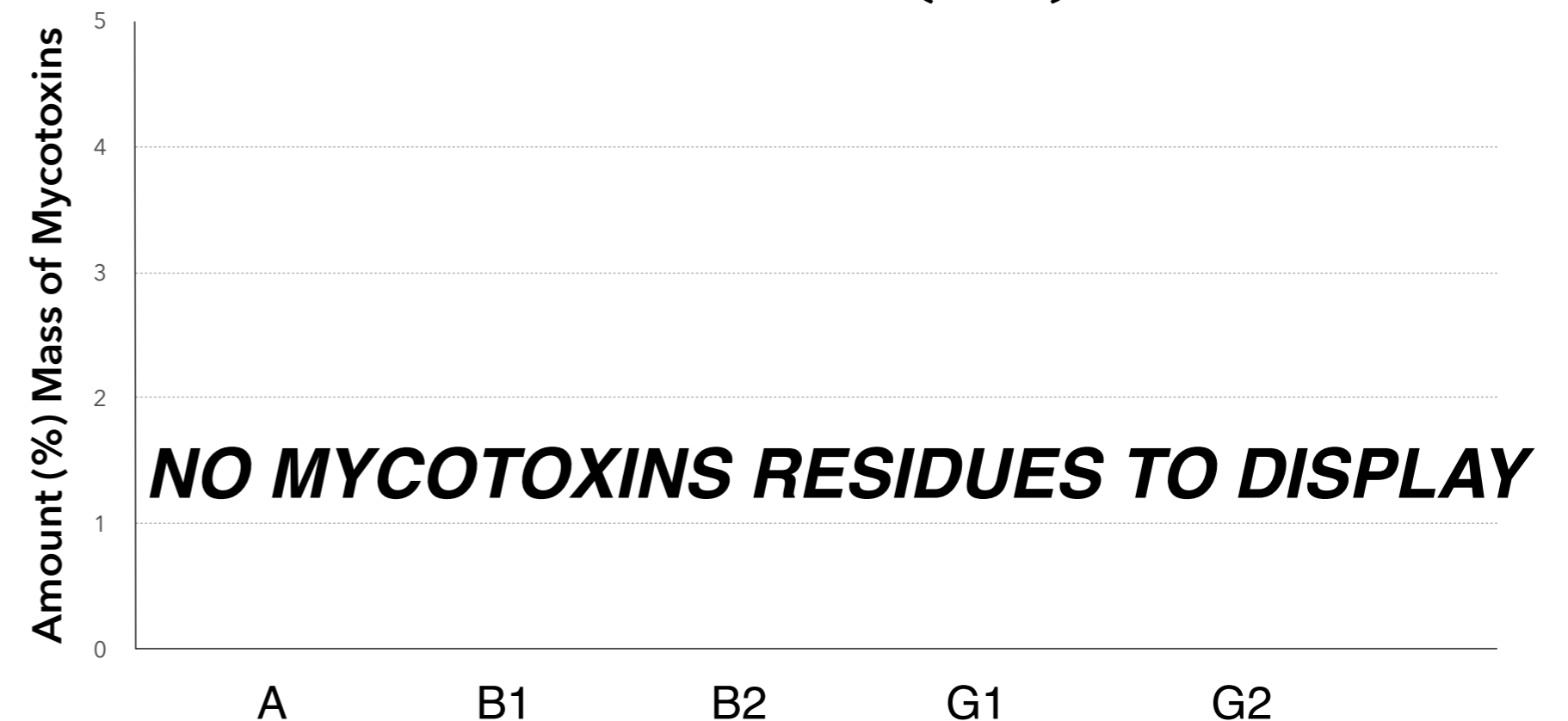
Responsible Supervisor:	<u>Martin V.</u>
Sample	<u>Batch# 19SA</u>
Date samples received:	<u>16-January 2019</u>
Date analysis began:	<u>16-January 2019</u>
Date sample report produced:	<u>31-January 2019</u>
ID Number when available:	<u></u>
Sample Mass	<u>1 g</u>

**Total CBD+CBDA 2.51%**

## Microbial Profile:

Component	Results	
<i>Candida albicans</i>	1 g	Not Detected
<i>Escherichia coli</i>	1 g	Not Detected
<i>Pseudomonas aeruginosa</i>	1 g	Not Detected
Staphylococcus aureus	1 g	Not Detected
Yeast	CFU	<1 x 10 <sup>1</sup>
Mould	CFU	<1 x 10 <sup>1</sup>

## All Mycotoxins at Non Detectable (ND) levels



# Endoca Certificate of Analysis

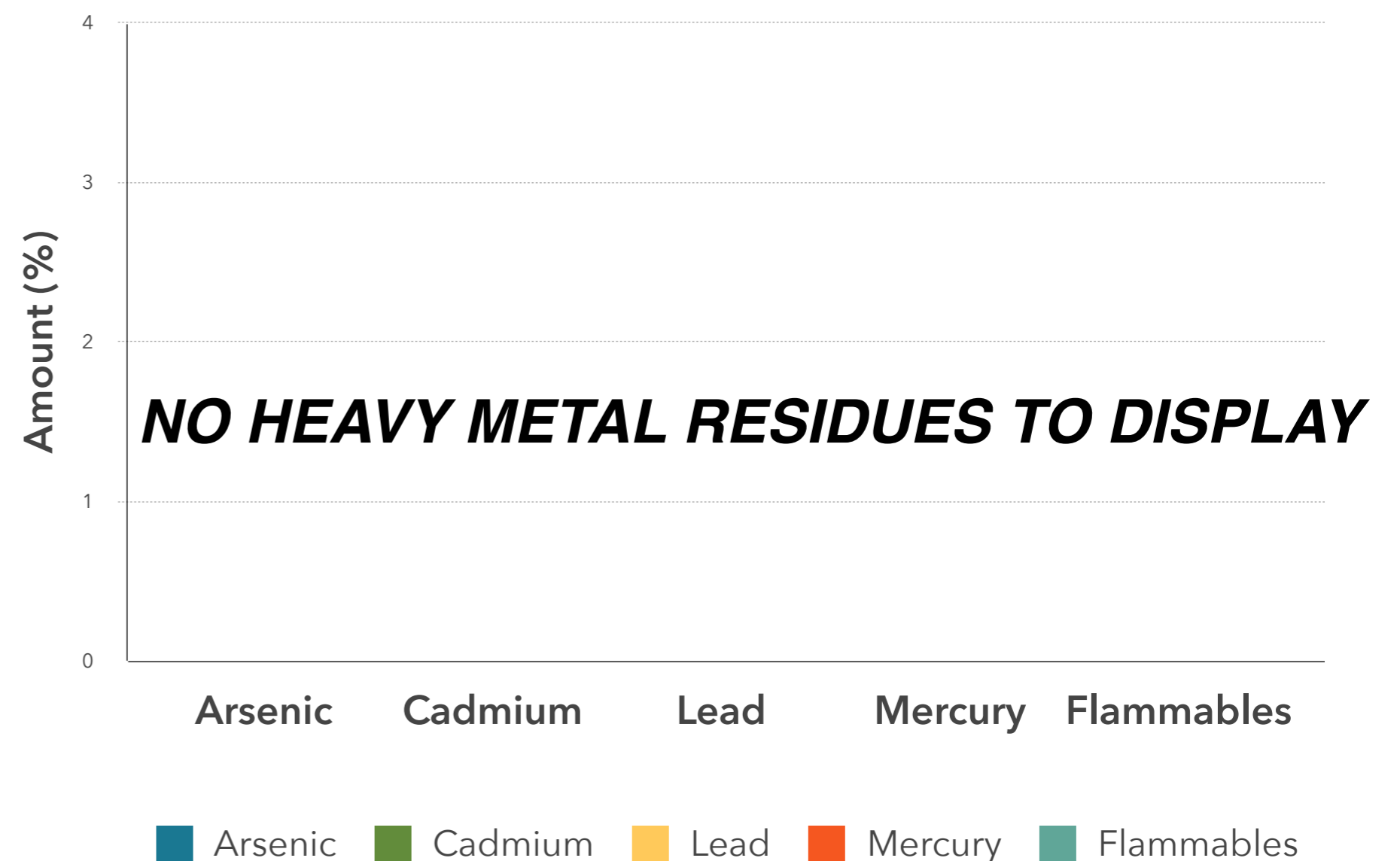
Endoca BV  
Siriusdreef 17 2132 WT Hoofddorp EU  
Phone: +31-238-080-104  
info@endoca.com  
www.endoca.com  
ISO 22000 certified  
HACCP certified; GMP certified

Responsible Supervisor: Martin V.  
Sample Batch# 19SA  
Date samples received: 16-January 2019  
Date analysis began: 16-January 2019  
Date sample report produced: 31-January 2019  
ID Number when available: \_\_\_\_\_  
Sample Mass 1 g

**Total CBD+CBDA 2.51%**  
**Heavy Metals Profile:**

Component	Mass (%)	Amount (mg/g)	Limit
Arsenic	< 0.01	ND	ND
Cadmium	< 0.01	ND	ND
Lead	< 0.01	ND	ND
Mercury	< 0.01	ND	ND
Flammables	< 0.01	ND	ND

**All Heavy Metals at Non Detectable (ND) levels**



## Conclusions:

**No heavy metal residues detected.**

**No flammable residues detected.**

**No chemical residues detected.**