

Endoca Certificate of Analysis

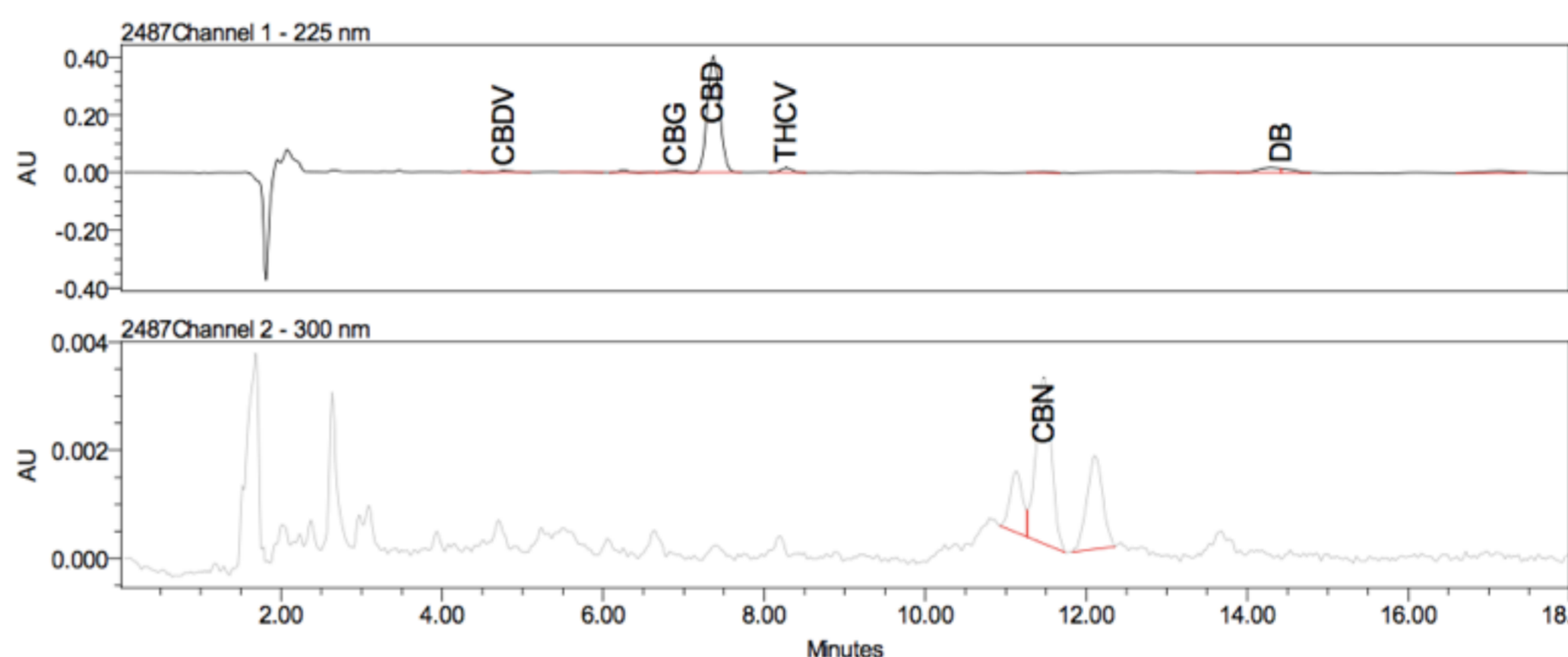
Endoca BV
Siriusdreef 17 2132 WT Hoofddorp EU
Phone: +31-238-080-104
info@endoca.com
www.endoca.com
ISO 22000 certified
HACCP certified; GMP certified

Responsible Supervisor:	Martin V.
Sample	Batch# 38G
Date samples received:	12-November 2018
Date analysis began:	12-November 2018
Date sample report produced:	11-December 2018
ID Number when available:	
Sample Mass	1 g

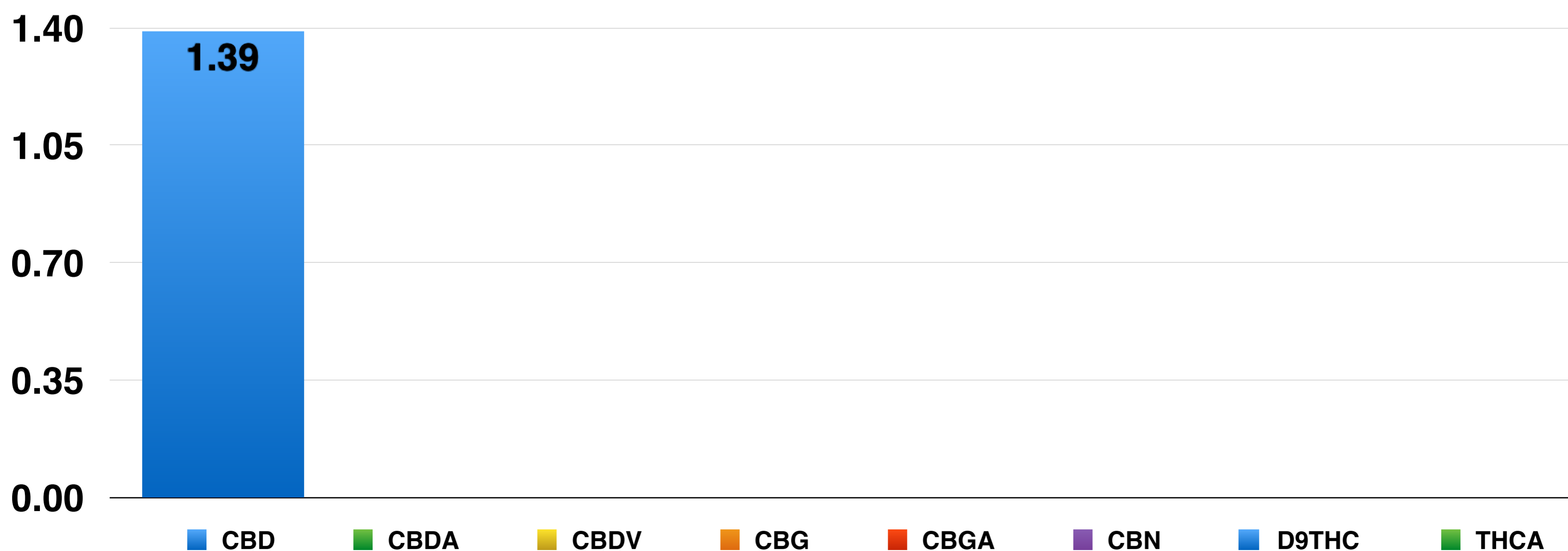
Cannabinoid Profile

Component	Mass (%)	Amount (mg/g)	Limit
CBD	1.39	13.90	N/A
CBDA	<0.05	<0.50	N/A
CBDV	<0.05	<0.50	N/A
CBG	<0.05	<0.50	N/A
CBGA	<0.05	<0.50	N/A
CBN	<0.05	<0.50	N/A
D9THC	<0.05	<0.50	N/A
THCA	<0.10	<1.00	N/A

HPLC Chromatograph Raw Data



Cannabinoids as Percent of Total Mass



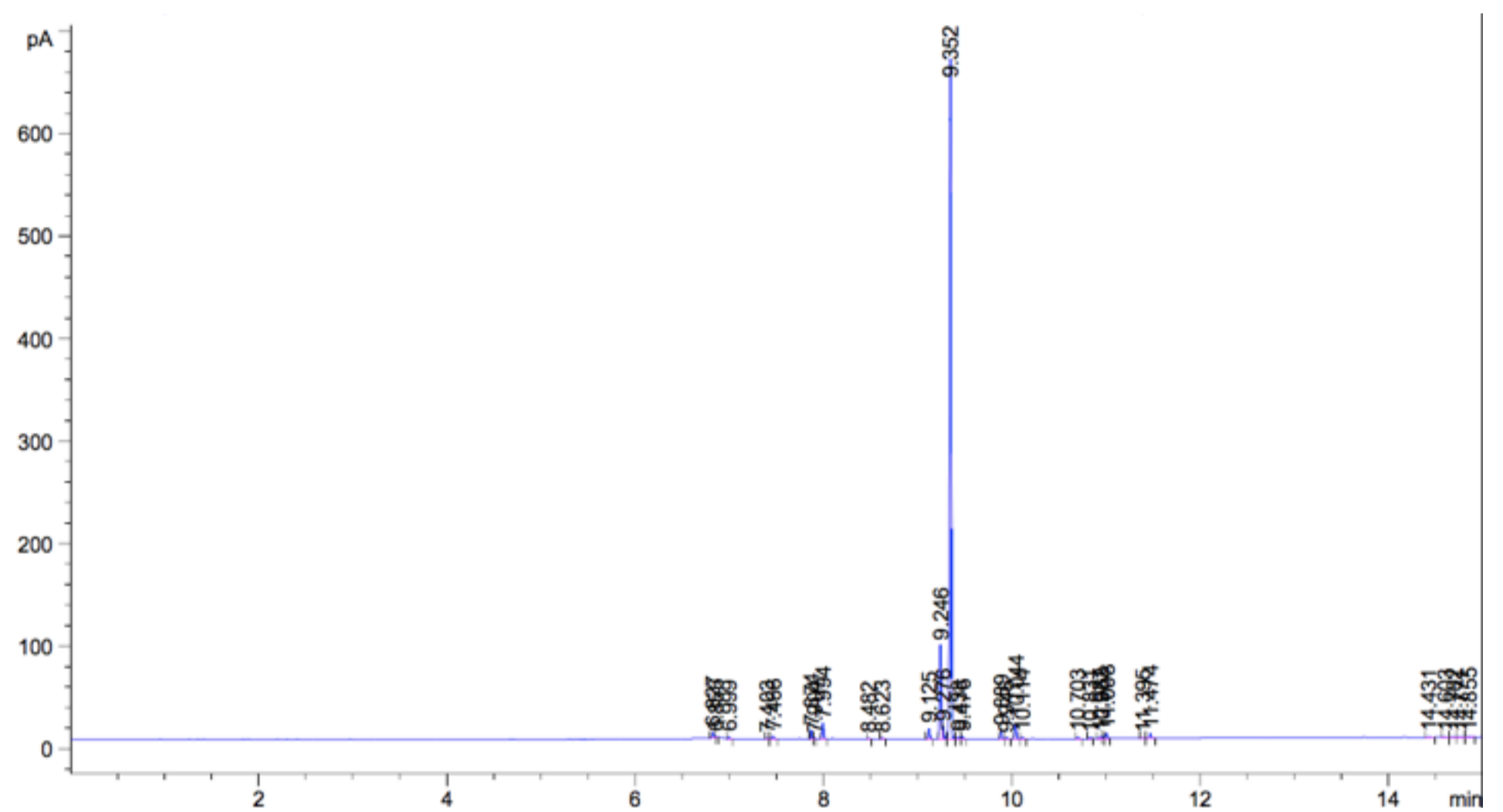
Endoca Certificate of Analysis

Endoca BV
Siriusdreef 17 2132 WT Hoofddorp EU
Phone: +31-238-080-104
info@endoca.com
www.endoca.com
ISO 22000 certified
HACCP certified; GMP certified

Responsible Supervisor:	Martin V.
Sample	Batch# 38G
Date samples received:	12-November 2018
Date analysis began:	12-November 2018
Date sample report produced:	11-December 2018
ID Number when available:	
Sample Mass	1 g

Terpenoid Profile:

Component	Amount %
β -Caryophyllene	<0.01
α -Humulene	<0.01
Caryophyllene oxide	<0.01
Myrcene	<0.01
α -Pinene	<0.01
Terpinolene	<0.01
Humulene epoxide II	<0.01
Limonene	<0.01
β -Pinene	<0.01
E- β -Ocimene	<0.01
Sabinene	<0.01
Linalool	<0.01



Terpenoid Distribution

- β -Caryophyllene
- α -Humulene
- Caryophyllene oxide
- Myrcene
- α -Pinene
- Terpinolene
- Humulene epoxide II
- Limonene
- β -Pinene
- E- β -Ocimene
- Sabinene
- Linalool

4

3

2

1

0

Endoca Certificate of Analysis

Endoca BV
Siriusdreef 17 2132 WT Hoofddorp EU
Phone: +31-238-080-104
info@endoca.com
www.endoca.com
ISO 22000 certified
HACCP certified; GMP certified

Responsible Supervisor:	<u>Martin V.</u>
Sample	<u>Batch# 38G</u>
Date samples received:	<u>12-November 2018</u>
Date analysis began:	<u>12-November 2018</u>
Date sample report produced:	<u>11-December 2018</u>
ID Number when available:	<u></u>
Sample Mass	<u>1 g</u>

Microbial Profile:

Component	Mass (%)	Amount (mg/g)
<i>Candida albicans</i>	1 g	Not Detected
<i>Escherichia coli</i>	1 g	Not Detected
<i>Pseudomonas</i>	1 g	Not Detected
Staphylococcus	1 g	Not Detected
Yeast	CFU	<1 x 10 ¹
Mould	CFU	<1 x 10 ¹

All Mycotoxins at Non Detectable (ND) levels



Conclusions:

All microbial residues including Listeria, Monocytogenes, E-Coli, Fungi, Salmonella and Molds are all below detectable thresholds

Endoca Certificate of Analysis

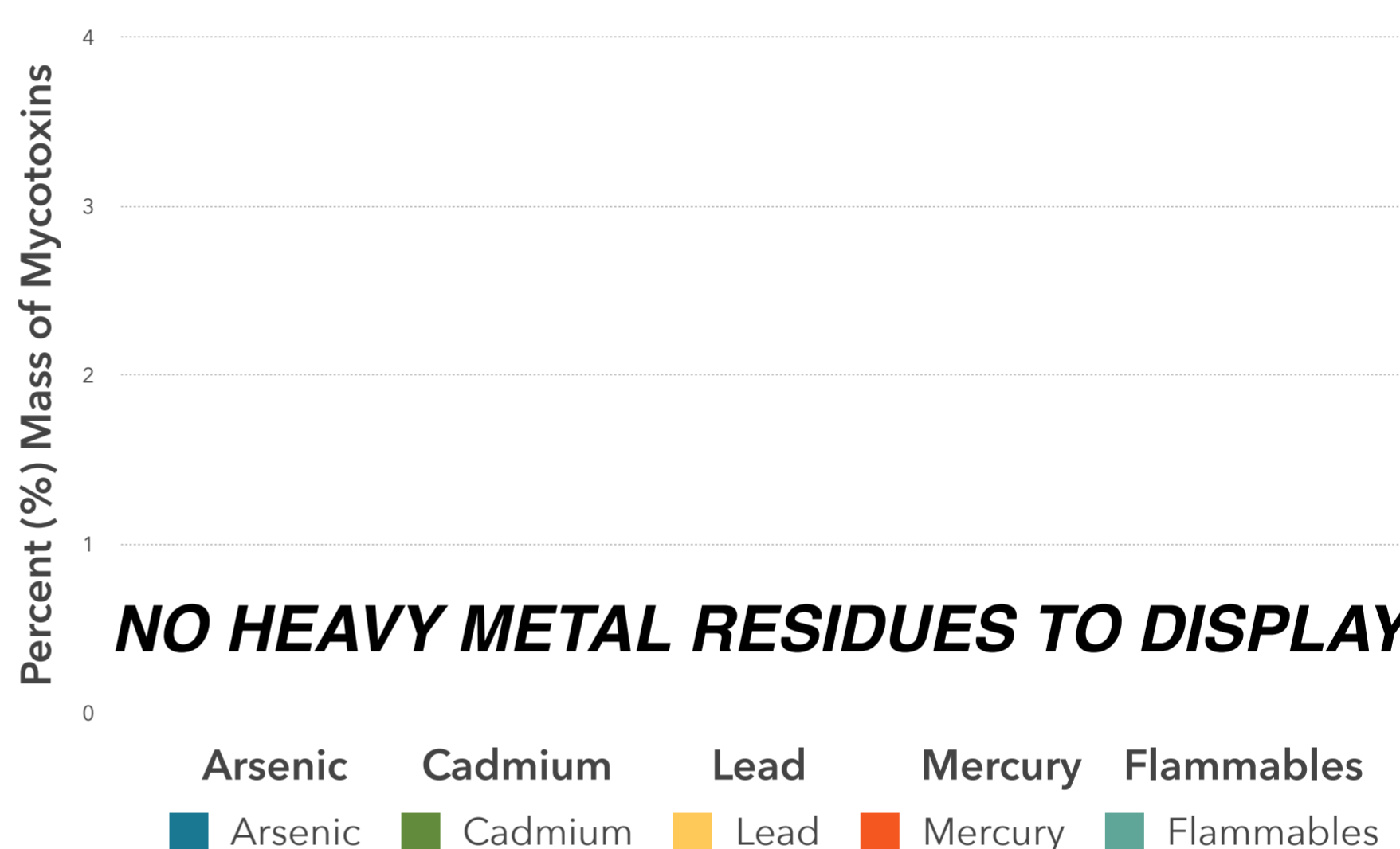
Endoca BV
Siriusdreef 17 2132 WT Hoofddorp EU
Phone: +31-238-080-104
info@endoca.com
www.endoca.com
ISO 22000 certified
HACCP certified; GMP certified

Responsible Supervisor: Martin V.
Sample Batch# 38G
Date samples received: 12-November 2018
Date analysis began: 12-November 2018
Date sample report produced: 11-December 2018
ID Number when available: _____
Sample Mass 1 g

Heavy Metals Profile:

Component	Mass (%)	Amount (mg/g)	Limit
Arsenic	< 0.01	ND	ND
Cadmium	< 0.01	ND	ND
Lead	< 0.01	ND	ND
Mercury	< 0.01	ND	ND
Flammables	< 0.01	ND	ND

All Heavy Metals at Non Detectable (ND) levels



Conclusions:

No heavy metal residues detected.

No flammable residues detected.

No chemical residues detected.