

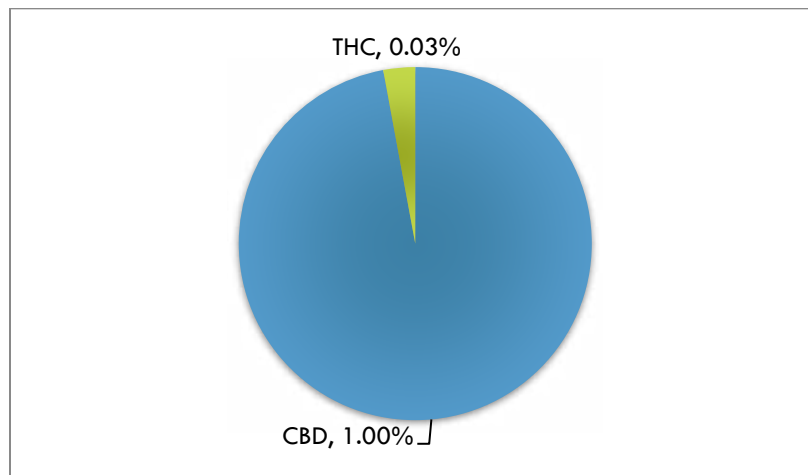


POTENCY REPORT

Material Tested: ELITE CBD PATCH
Testing Method: UPLC-DAD
Date Tested: 01/26/2018
Batch Number: F0118836
Testing Analyst: Ben Dennis Reviewed by Jeremy Riggle PHD
Total Product Mass: 1 GRAM

ACIDIC COMPOUND mg/unit		NEUTRAL COMPOUND mg/unit	
CBDA	<0.1%	CBD	1.00%
THCA	<0.1%	THC	<0.1%
CBCA	<0.1%	CBC	<0.1%
CBGA	<0.1%	CBG	<0.1%
CBNA	<0.1%	CBN	<0.1%
THCVA	<0.1%	THCV	<0.1%
CBDVA	<0.1%	CBDV	<0.1%

Cannabinoid Content (wt/wt)



Mary's Nutritionals, LLC is a wholly owned subsidiary of Mary's Medicinals, LLC. Information provided in this report is for CBD rich hemp cultivated by Elite Botanicals, Loveland CO.

